

## *Related Project Experience - The Sanberg Group, Inc.*

### PROJECT TITLE AND LOCATION:

España Project (CA-Riv-7458, 7459, 7460), Riverside County, California

### YEAR(s) PROFESSIONAL SERVICES PROVIDED:

September 2004 through February 2005

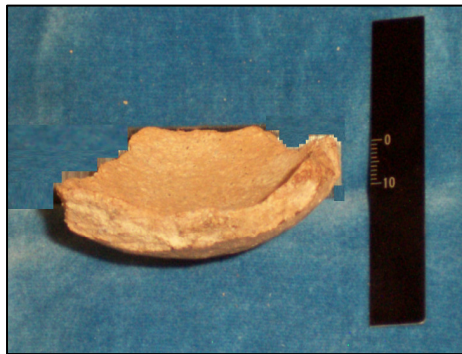
May 2006 through October 2006

### BRIEF DESCRIPTION OF PROJECT:

TSG was retained as a sub consultant to perform petrographic and geochemical analyses of selected prehistoric pottery samples and daub found at the España site, located in eastern Riverside County, California. Petrographic analytical techniques were performed to characterize pottery samples for a number of factors to be considered when discriminating between temper (defined as: material, mineral, or organic added to clay), natural inclusions and microlites. In addition, temper, grain size and shape (larger than clay size), as well as the mineral constituents were compared with the clay material. Data produced also includes grain size, distribution and the quantity of inclusions.



The geochemical analysis implemented in this study incorporated techniques that are typically used to analyze igneous rocks. This method of analysis was used because of the high percentage of igneous rock



fragments and minerals noted during petrographic analysis. Trace elements that are especially abundant in the feldspar minerals normally present in these rocks were deemed of first importance. The findings of the study provided important data which contributed to the formal structure being developed for the Patayan pottery

types found in this region and their relationship to the regional pottery manufactured by the Cahuilla today.

